

# CAN104

Dual-Channel PC/104 CAN Controller



**Advanced Micro  
Peripherals**

THE EMBEDDED VIDEO EXPERTS

The Advanced Micro Peripherals CAN104 is a two-port, high-speed Controller Area Network (CAN) interface controller based on the rugged and compact PC/104 form factor.

The CAN104 contains two Philips SJA1000 CAN controllers with advanced features for use in automotive and general industrial applications. CAN104 supports both BasicCAN power-up mode and the enhanced functionality of the PeliCAN mode.



In the PeliCAN mode the CAN104 handles all CAN frame types according to CAN specification 2.0B and provides a number of error analysis functions to support diagnosis, system maintenance and performance optimization.

Robust  
networking  
in  
automotive  
and  
industrial  
environments



# CAN104

## Dual-Channel PC/104 CAN Controller



The CAN104 features an optional Compact Flash adaptor providing solid-state disk storage for Tiny and Micro886 PC/104plus computer systems.



### Applications

Data Acquisition

Machine Control

Machine networks

Test and Measurement

Industrial Process Monitoring

Building and Lift Management

Road Traffic Signalling and Control

Speed Cameras and Traffic Monitoring

Vending Machines, POS, ATM Systems

Automotive Instrumentation and Metering

High-speed

CAN

data

throughput

**Advanced Micro Peripherals Ltd**

Cambridge, CB6 2HY, England

Tel (+44) 1353 659500

Tel (+44) 1353 659600

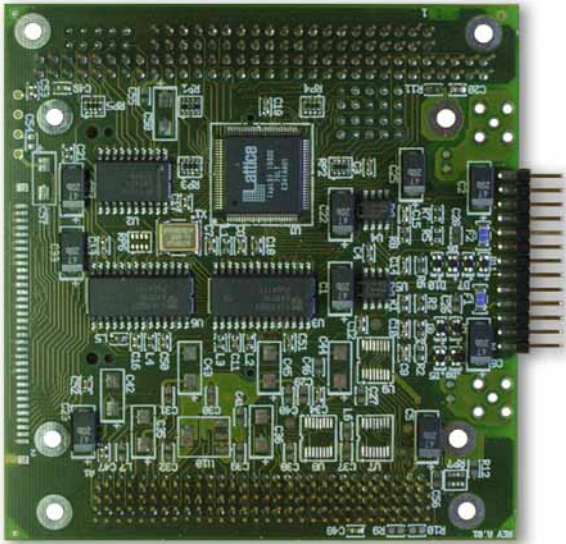
[sales@ampltd.com](mailto:sales@ampltd.com)

<http://www.ampltd.com>



# CAN104

Dual-Channel PC/104 CAN Controller



**CAN104**

## Features

- Single +5V power supply
- CAN bit rates up to 1Mbits/sec
- Standard PC/104plus for factor
- BasicCAN and PeliCAN support
- Selectable network termination
- C/C++ Library for development
- Two independent CAN Controllers
- Supports 11-bit and 29-bit identifiers
- Message FIFO to offload PC/104 host CPU
- Optional FlashDisk for Tiny/Micro886ULP

Comprehensive  
software  
support

**CAN Channels**

2 Channels each with SJA1000 Controller  
 Basic CAN Mode support  
 Extended CAN Mode (PELICAN Mode) support  
 Two independent full-duplex channels

**CAN Modes****Basic Mode**

Extended Receive Buffer (64-byte receive FIFO)  
 Up to 1MBit/sec data rates  
 Support for 11-bit and 29-bit identifiers

**PELICAN Mode Extensions**

Error counters with read/write access  
 Error warning limit  
 Error Interrupts  
 Listen-only capability  
 Hot-plugging support

**CAN Interface**

Two independent non-isolated CAN buses

**Physical**

Single +5V at less than 700mA  
 Operating Temp 0°C to 60°C or -40°C to +85°C (extended temp option)  
 Standard 3.6 x 3.8in PC/104+ form factor

**Solid-State Disk**

The CAN104 is available with optional bootable CompactFlash Solid-State Disk (SSD) especially for use with Micro886ULP and Tiny886ULP PC/104+ Computers

**Ordering Information**

CAN104	2-channel PC/104 CAN Controller
Cable-CAN 104	Cable set for CAN104 Controller
CAN104-SSDxxxx	2 CAN Channels plus CFlash SSD, where
CAN104-SSD0512	512MBytes FlashDisk
CAN104-SSD1024	1GBytes FlashDisk
CAN104-SSD2048	2GBytes FlashDisk
CAN104-SSD4096	4GBytes FlashDisk