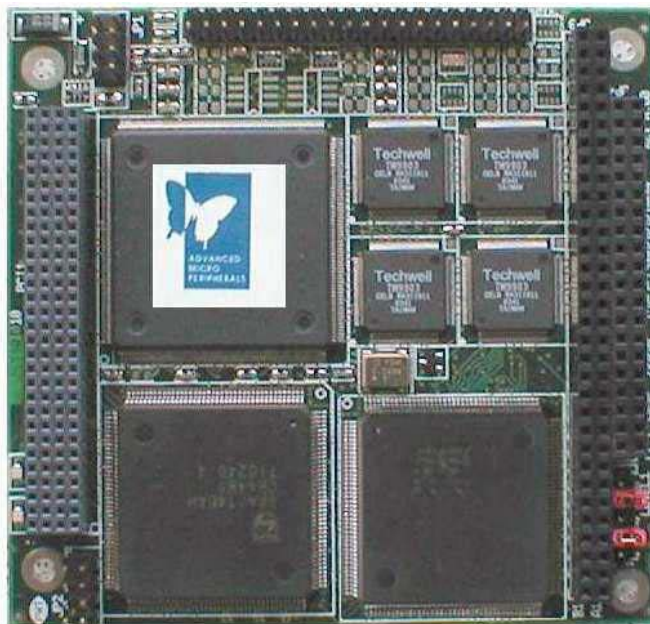


MTV4000 4-Channel Video Overlay Controller for PC/104+



General Description

The **MTV4000** is a high performance real time Video Capture and Overlay Controller capable of streaming 4 live **PAL/NTSC** video channels to system display. Utilising the 32-bit PCI architecture, the **MTV4000** allows high quality real-time video from up to 4 concurrent **PAL** or **NTSC** video sources to be captured and overlaid on the system display. Built-in video multiplexers allow selection of 4 concurrent sources from a total of up to 16 cameras. Any of the 4 selected inputs can be re-sized, cropped, re-positioned and overlaid on top of text/graphics on the system display. Viewing modes include side-by-side, quadrant display, picture-in-picture, etc providing a high degree of video overlay flexibility. The **MTV4000** is supported by a suite of drivers for Windows-NT/2000/XP, Linux.

The **MTV4000** is an ideal solution for multi-channel video capture/overlay, video surveillance, multimedia content creation and internet/intranet video streaming applications.

Features

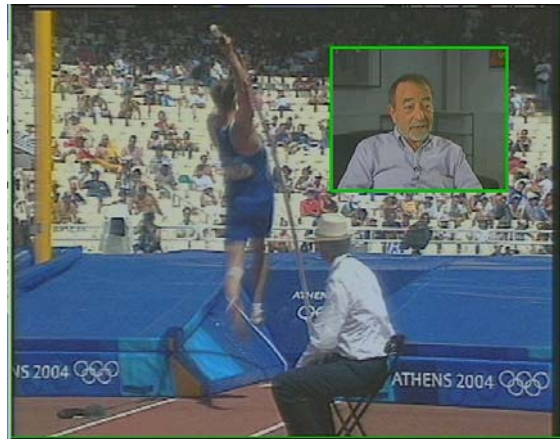
- 4 Asynchronous Live Video Inputs
- Live input from NTSC/PAL
- Composite Video input
- 4 Real-time Video Windows to system VGA
- Re-sizing and Positioning of Video Windows
- Pan and Zoom of Video Windows
- Fixed Font On-Screen Text Overlay
- Titles and Borders for each Video Window
- Up to 4 MTV4000 cards per system

Applications

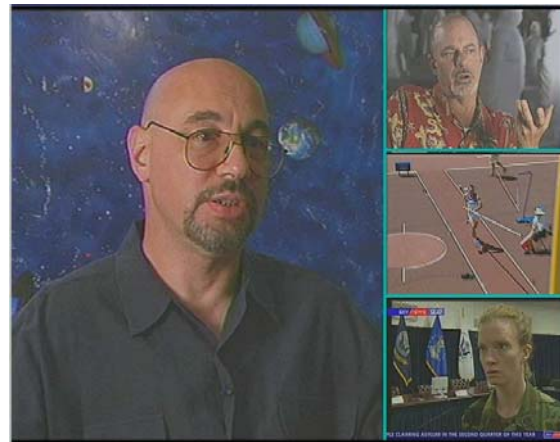
- Control Rooms
- Air-Traffic Control
- Mediacal Operating Theatre
- Remote Video Surveillance
- Multi-camera Security Application
- Video Motion Detection
- Traffic Monitoring and Control
- Video Acquisition and Analysis

MTV4000 4-Channel Video Overlay Controller for PC/104+

Picture-in-Picture
Green borders



Main Picture and 3 sub-pictures
Cyan borders



Quadrant Picture Display
Yellow borders
Camera number annotation



Live Overlay on Explorer
4 Live Video Sources overlaid on system display

