

# VGACOMP-IS

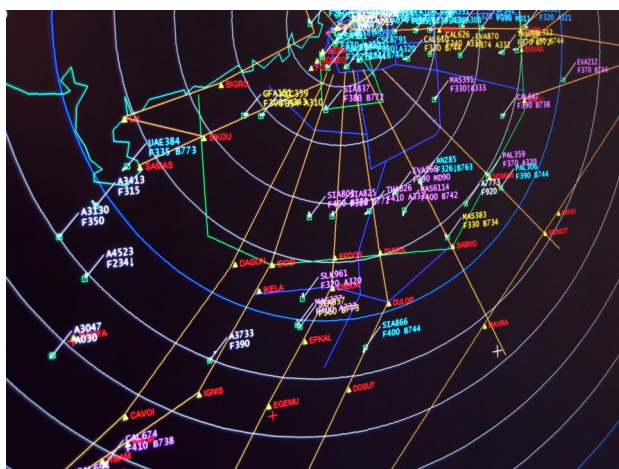
VGA-to-PAL/NTSC/RS-170 standalone scan converter



**Advanced Micro Peripherals**

THE EMBEDDED VIDEO EXPERTS

The VGACOMP-IS is an intelligent stand-alone scan converter that accepts VGA signals at up to 1920x1080 and converts them to broadcast quality PAL/NTSC/RS-170 composite video.



The VGACOMP-IS features high speed analog signal digitization, video scaling, frame rate conversion and a timing generator. Processing and scaling is performed in the digital domain for maximum quality before the video data is sent to a digital video encoder for conversion to broadcast quality composite PAL/NTSC/RS-170. This provides seamless and automatic conversion of progressive analog VGA to PAL/NTSC/RS-170 composite video.

The VGACOMP-IS is an intelligent stand-alone device with it's own on-board MPU and does not require a host CPU or any driver software. For mechanical convenience the module can be mounted on a PCI-104 stack without consuming host CPU resources.

Rev A.00

Subject to change without notification

**Advanced Micro Peripherals Ltd**  
Cambridge, CB6 2HY, England  
Tel (+44) 1353 659500  
Fax (+44) 1353 659600  
[sales@ampitd.com](mailto:sales@ampitd.com)  
<http://www.ampitd.com>

**Advanced Micro Peripherals Inc**  
New York, NY10016, USA  
Tel (+1) 212 951 7205  
Fax (+1) 212 951 7206  
[sales@amp-usa.com](mailto:sales@amp-usa.com)  
<http://www.amp-usa.com>

Convert  
Standard  
Analog  
VGA  
to  
PAL / NTSC / RS-170



# VGACOMP-IS

VGA-to-PAL/NTSC/RS-170 standalone scan converter



**Advanced Micro  
Peripherals**

THE EMBEDDED VIDEO EXPERTS



On-board  
MPU  
for  
Intelligent,  
Stand-alone  
Operation

## Applications

Aerospace instrumentation  
Instrument panel  
Multi-function display (MFD)  
Situational Awareness  
Remote Video Surveillance  
Naval/Marine instrumentation  
Border Security  
Traffic Monitoring and Control  
Video Acquisition and Analytics

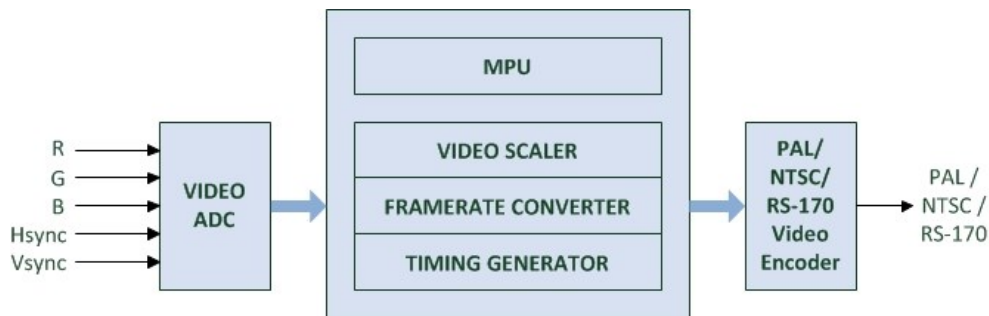
**Advanced Micro Peripherals Ltd**  
Cambridge, CB6 2HY, England  
Tel (+44) 1353 659500  
Fax (+44) 1353 659600  
[sales@amp ltd.com](mailto:sales@amp ltd.com)  
<http://www.amp ltd.com>

**Advanced Micro Peripherals Inc**  
New York, NY10016, USA  
Tel (+1) 212 951 7205  
Fax (+1) 212 951 7206  
[sales@amp-usa.com](mailto:sales@amp-usa.com)  
<http://www.amp-usa.com>



# VGACOMP-IS

VGA-to-PAL/NTSC/RS-170 standalone scan converter



**VGACOMP-IS Functional Diagram**

Aerospace and  
Marine  
Instrumentation

Border  
Security

## Features

- Converts standard analog VGA to PAL/NTSC/RS-170
- Supports VGA input up to 1920x1080
- Composite PAL, NTSC, or RS170 output
- Single +5V power supply
- Stand-alone operation
- Operating system neutral
- Standard PCI-104 mechanical form factor

### Analog Video Input

Progressive scan RGB, H-Sync, V-Sync (Analog VGA)  
 3x 10bit analog-to-digital converters  
 Up to 1920x1080 VGA input resolution

### Analog Video Output

Supported output standards:  
 CCIR601-NTSC  
 RS170  
 CCIR-PAL  
 PAL-B, PAL-G, PAL-H, PAL-I  
 10bit digital-to-analog conversion  
 Composite video output

### Miscellaneous

Intelligent stand-alone module, does not require host computer  
 Standard 3.6 x 3.8in PCI-104 form factor  
 Mechanical mounting for PCI-104 stack  
 Single +5V supply  
 Operating temp 0°C to 60°C  
 Operating temp -40°C to +85°C (extended temp option)

### Ordering Information

#### VGACOMP-IS-PAL

VGA to PAL scan converter (0°C to 60°C)

#### VGACOMP-IS-PAL-EXT

VGA to PAL scan converter (-40°C to +85°C)

#### VGACOMP-IS-NTSC

VGA to NTSC scan converter (0 to 60°C)

#### VGACOMP-IS-NTSC

VGA to NTSC scan converter (-40°C to +85°C)

#### VGACOMP-IS-RS170

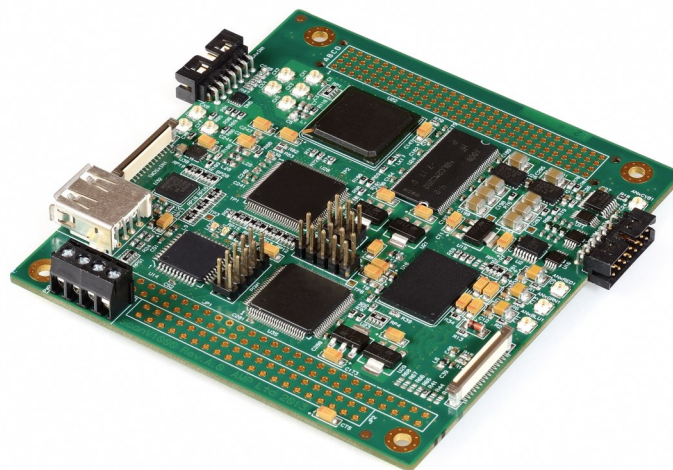
VGA to RS170 scan converter (0°C to +60°C)

#### VGACOMP-IS-RS170-EXT

VGA to RS170 scan converter (-40°C to +85°C)

#### Cable-VGACOMP

Cable set for VGACOMP-IS  
 (1x VGA input cable, 1x u.FL-to-BNC coax output cable)



**VGACOMP-IS**