

# Bridge-PCIe104-T

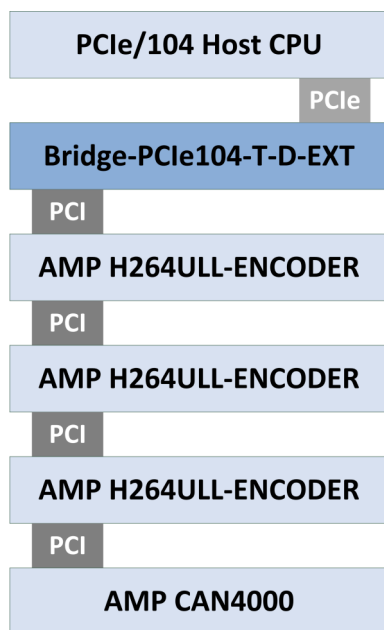
PCIe/104 to PCI-104 Bridge



**Advanced Micro  
Peripherals**

THE EMBEDDED VIDEO EXPERTS

The Bridge-PCIe104-T is a PCIe/104 to PCI-104 bridge module that allows the use of PCI-104 peripheral boards on PCIe/104 systems. The Bridge-PCIe104-T allows AMP's range of proven PCI-104 video boards to be employed on the latest PCIe/104 CPU host boards.



## Bridge-PCIe104 Application – Mobile Video Surveillance

The Bridge-PCIe104-T uses a single PCIe x1 Lane and supports up to 4 peripheral PCI-104 cards. The provided PCI interface is a full PCI implementation allowing the peripheral PCI-104 modules to be used as full PCI masters for high performance video capture and compression and other applications.

The Bridge-PCIe104-T is available in both top and bottom stacking models for flexible system construction. The Bridge-PCIe104 is natively supported in Windows and Linux and does not require any additional drivers.

### Rev A.00

Subject to change without notification

Supports 4  
PCI-104  
Peripheral Cards



**PC/104**

Embedded PC Modules

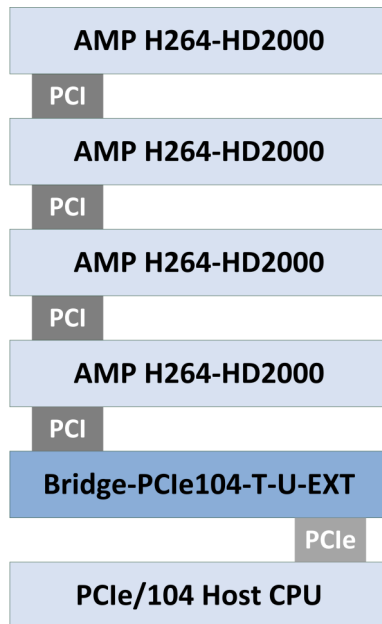
# Bridge-PCIe104-T

PCIe/104 to PCI-104 Bridge



**Advanced Micro  
Peripherals**

THE EMBEDDED VIDEO EXPERTS



**Bridge-PCIe104-T Application — 8 Channel HD Video Encoder**

Single PCIe x1

Lane to full

PCI Bus

Interface

## Features

PCI Express (PCIe) bridge to PCI-104 32bit bus

Supporting 4 PCI Bus master modules

Uses a single PCIe x1 Lane (OneBank™)

Allows use of proven PCI-104 cards in PCIe104 systems

Available in top and bottom stacking configurations

Natively supported in Windows and Linux

**Advanced Micro Peripherals Ltd**  
Cambridge, CB6 2HY, England  
Tel (+44) 1353 659500  
Fax (+44) 1353 659600  
[sales@amp ltd.com](mailto:sales@amp ltd.com)  
<http://www.amp ltd.com>

**Advanced Micro Peripherals Inc**  
New York, NY10007, USA  
Tel (+1) 212 951 7205  
Fax (+1) 212 658 9073  
[sales@amp-usa.com](mailto:sales@amp-usa.com)  
<http://www.amp-usa.com>



**PC/104**

Embedded PC Modules

### PCI/104-Express Bus Interface

Single x1 PCI Express Link using PCIe/104 OneBank™ connector  
PCIe Gen 2.0  
2.5Gbps data rate

### PCI-104 Bus Interface

32-bit 33Mhz PCI Bus  
Four Bus Master peripheral cards

### Mechanical

Standard 3.6 x 3.8in PCI/104-Express form factor  
Single +5V supply  
Operating temp -40°C to +85°C

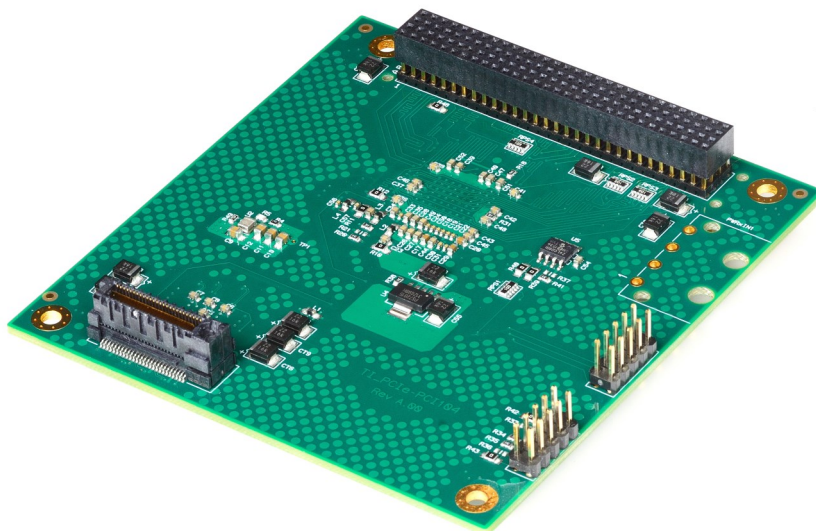
### Ordering Information

#### Bridge-PCIe104-T-U-EXT

PCIe/104 to PCI-104 Bridge, PCI-104 stack up  
(-40°C to +85°C)

#### Bridge-PCIe104-T-D-EXT

PCIe/104 to PCI-104 Bridge, PCI-104 stack down  
(-40°C to +85°C)



**Bridge-PCIe104-T**