

PCIeAdapter

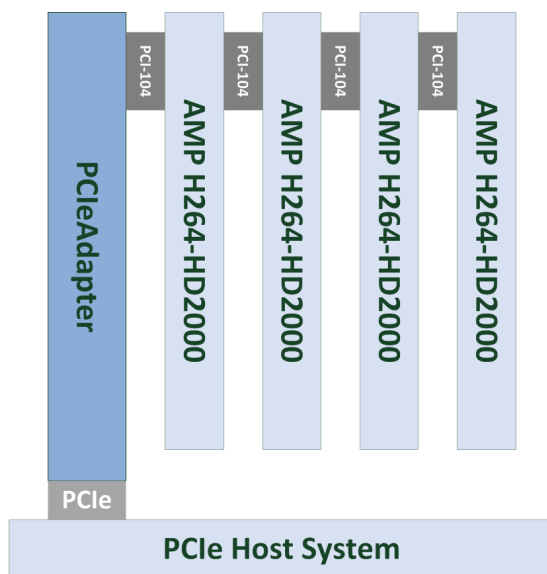
PCIe to PCI-104 Bridge card



**Advanced Micro
Peripherals**

THE EMBEDDED VIDEO EXPERTS

The PCIeAdapter is a PCI Express (PCIe) to PCI-104 bridge module that allows the use of PCI-104 peripheral boards on PCIe systems. The PCIeAdapter allows AMP's range of proven PCI-104 video boards to be employed on systems with a PCIe slot.



Bridge-PCIe104 Application — 8 channel HD video encoder

The PCIeAdapter uses a single PCIe x1 Lane and supports up to 4 peripheral PCI-104 cards. The provided PCI interface is a full PCI implementation allowing the peripheral PCI-104 modules to be used as full PCI masters for high performance video capture and compression and other applications.

The PCIeAdapter has a peripheral power input to provide power to the PCI-104 bus. The PCIeAdapter is natively supported in Windows and Linux and does not require any additional drivers.

Rev A.00

Subject to change without notification

Advanced Micro Peripherals Ltd
Cambridge, CB6 2HY, England
Tel (+44) 1353 659500
Fax (+44) 1353 659600
sales@ampltd.com
<http://www.ampltd.com>

Advanced Micro Peripherals Inc
New York, NY10016, USA
Tel (+1) 212 951 7205
Fax (+1) 212 951 7206
sales@amp-usa.com
<http://www.amp-usa.com>

Supports 4
PCI-104
Peripheral Cards



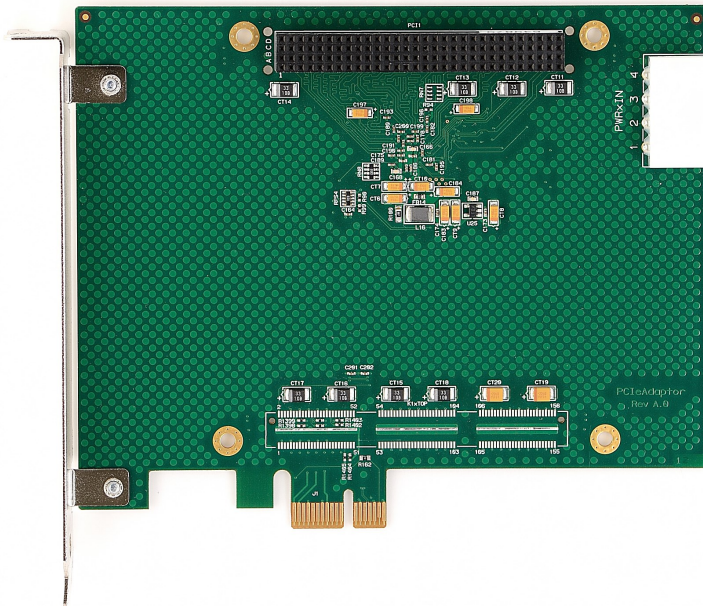
PCIeAdapter

PCIe to PCI-104 Bridge card



**Advanced Micro
Peripherals**

THE EMBEDDED VIDEO EXPERTS



PCIeAdapter

Single PCIe x1

Lane to full

PCI Bus

Interface

Features

PCI Express (PCIe) bridge to PCI-104 32bit bus

Supporting 4 PCI Bus master modules

Uses a single PCIe x1 Lane

Allows use of proven PCI-104 cards in PCI Express systems

Power input for PCI-104 stack power

Natively supported in Windows and Linux

Advanced Micro Peripherals Ltd
Cambridge, CB6 2HY, England
Tel (+44) 1353 659500
Fax (+44) 1353 659600
sales@amp ltd.com
<http://www.amp ltd.com>

Advanced Micro Peripherals Inc
New York, NY10016, USA
Tel (+1) 212 951 7205
Fax (+1) 212 951 7206
sales@amp-usa.com
<http://www.amp-usa.com>



PCI Express Bus Interface

Single x1 PCI Express Link
PCIe Gen 2.0
2.5Gbps data rate

PCI-104 Bus Interface

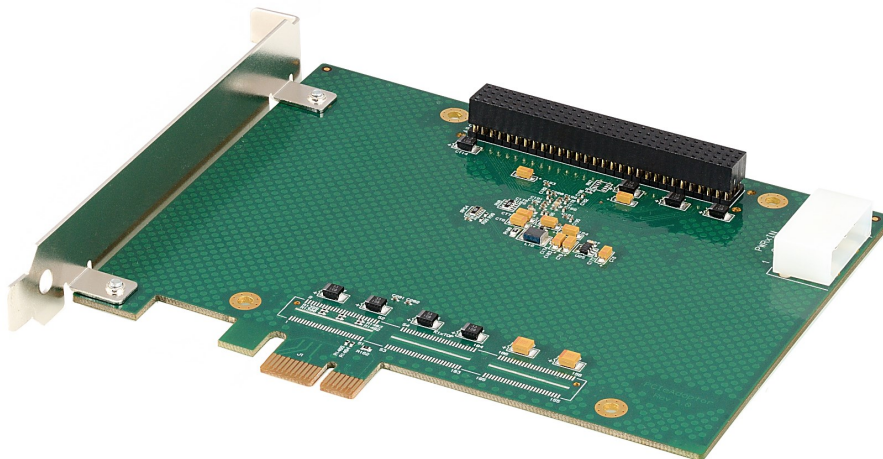
32-bit 33Mhz PCI Bus
Four Bus Master peripheral cards

Mechanical

PCI Express x1 card.
Peripheral power socket (4pin Molex connector) for stack power
Single +5V supply
Operating temp -40°C to $+85^{\circ}\text{C}$

Ordering Information

PCIeAdapter
PCIe to PCI-104 Bridge (-40°C to $+85^{\circ}\text{C}$)



PCIeAdapter